

# Organizational Chart

## Table of Contents

### President

- [Administration](#)
- [President](#)
- [Community College Board](#)
- [Campus Security](#)
- [College Development](#)
- [Institutional Effectiveness](#)
- [Small Business Development Center](#)

### Academic Affairs

- [VP Academic & Student Affairs](#)
- [GEAR UP](#)

### Arts & Science

- [Learning Resource Center](#)
- [Social Sciences, Education & Public Service](#)
- [Title III STEM Pathways](#)
- [Title V Guided Pathways](#)

### Business Affairs

- [Business Office](#)
- [Human Resources](#)
- [Information Technology \(IT\)](#)
- [Payroll](#)
- [Physical Plant](#)
  - [Grounds](#)
  - [Custodial Services](#)

### Health Education

- [Health Education](#)
- [Emergency Medical Services](#)
- [Nursing/Nursing Assisting](#)
- [Occupational Therapy Assistant](#)
- [Phlebotomy](#)
- [Respiratory Therapy](#)
- [SIM Lab](#)

### Student Affairs

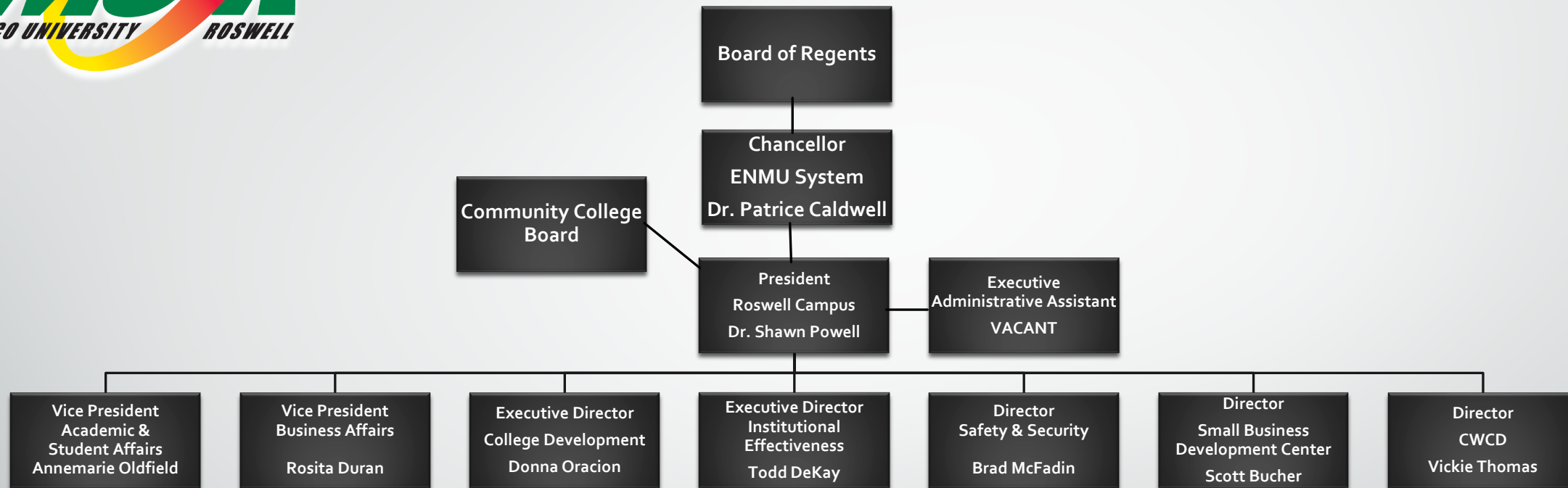
- [Admissions & Records](#)
- [Educational Opportunity Center](#)
- [Educational Talent Search](#)
- [Advising](#)
- [Financial Aid](#)
- [Physical Education Center](#)
- [Recruiting](#)
- [Testing Services](#)
- [Student Support Services](#)
- [Upward Bound](#)

### Technical Education

- [Adult Education](#)
- [Automotive Technology](#)
- [Aviation Maintenance Technology](#)
- [Commercial Driver's License](#)
- [Heating Ventilation Air Conditioning Refrigeration Technology](#)
- [Media Arts](#)
- [Occupational Safety Engineering](#)
- [Special Services](#)
- [Welding Technology](#)



# Administration



[Return to  
Table of Contents](#)

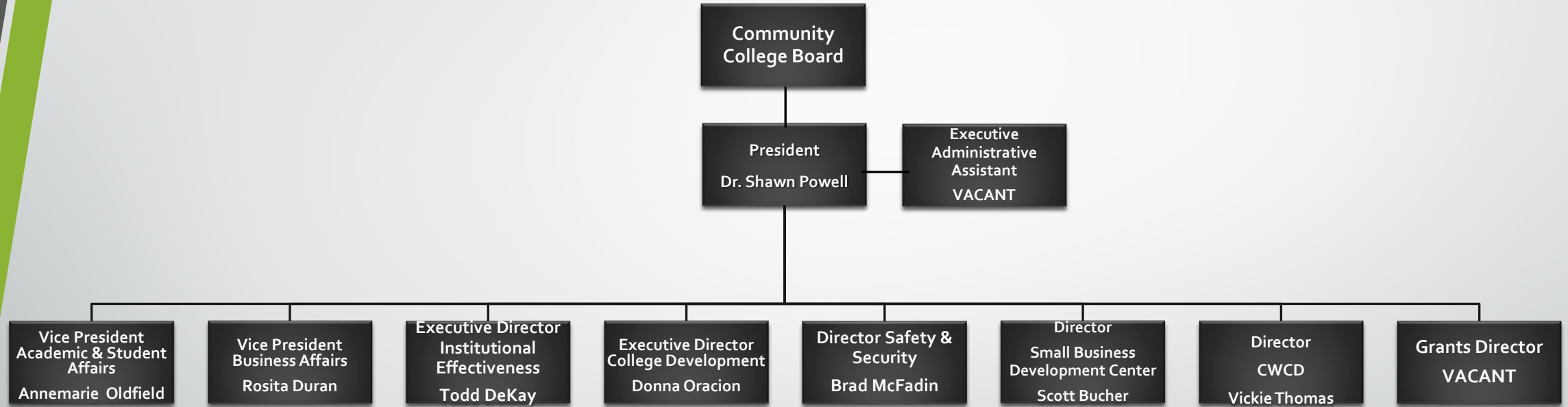


# Community College Board

- Mireya Trujillo – President
- Carleton “Cla” Avery – Vice President
- Tamaliah “Tammy” Lueras – Secretary
- Rissie Daubert – Board Member
- Jamila Miller – Board Member

[Return to  
Table of Contents](#)

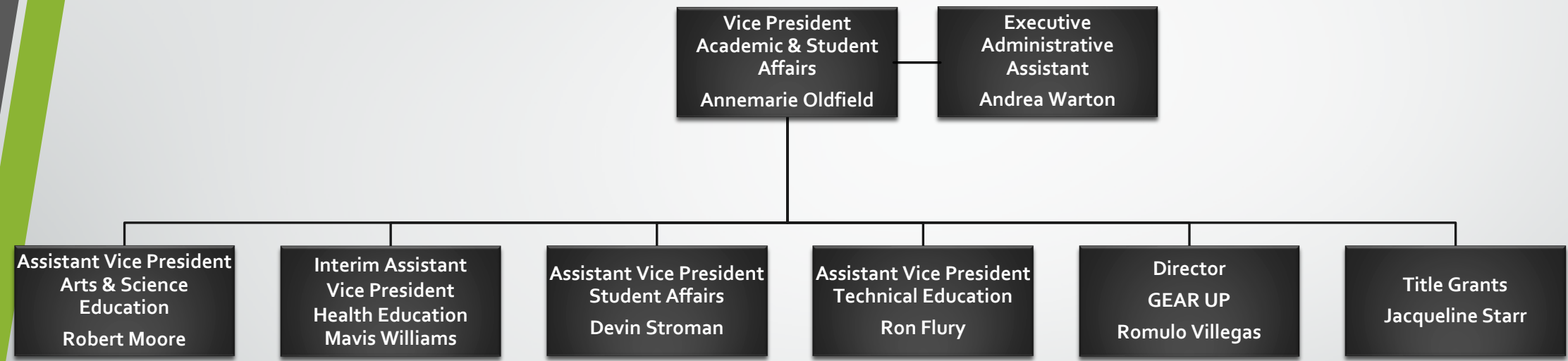
# President



[Return to  
Table of Contents](#)



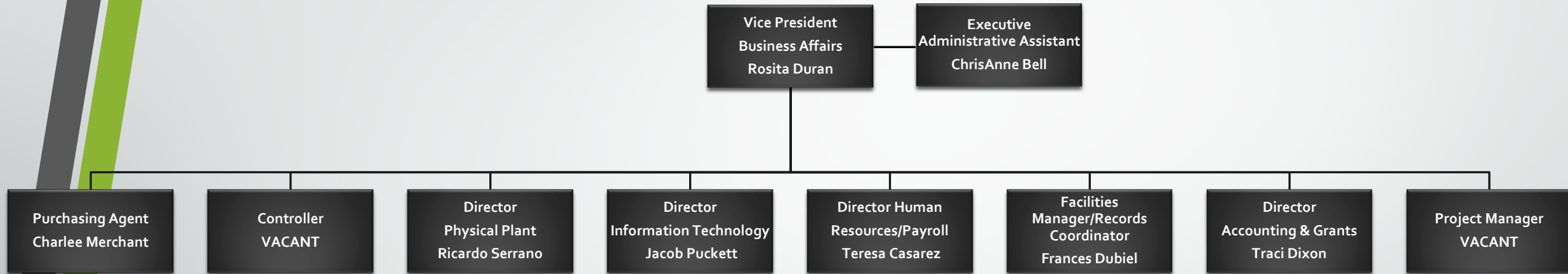
# Vice President of Academic & Student Affairs



[Return to Table of Contents](#)



# Vice President of Business Affairs



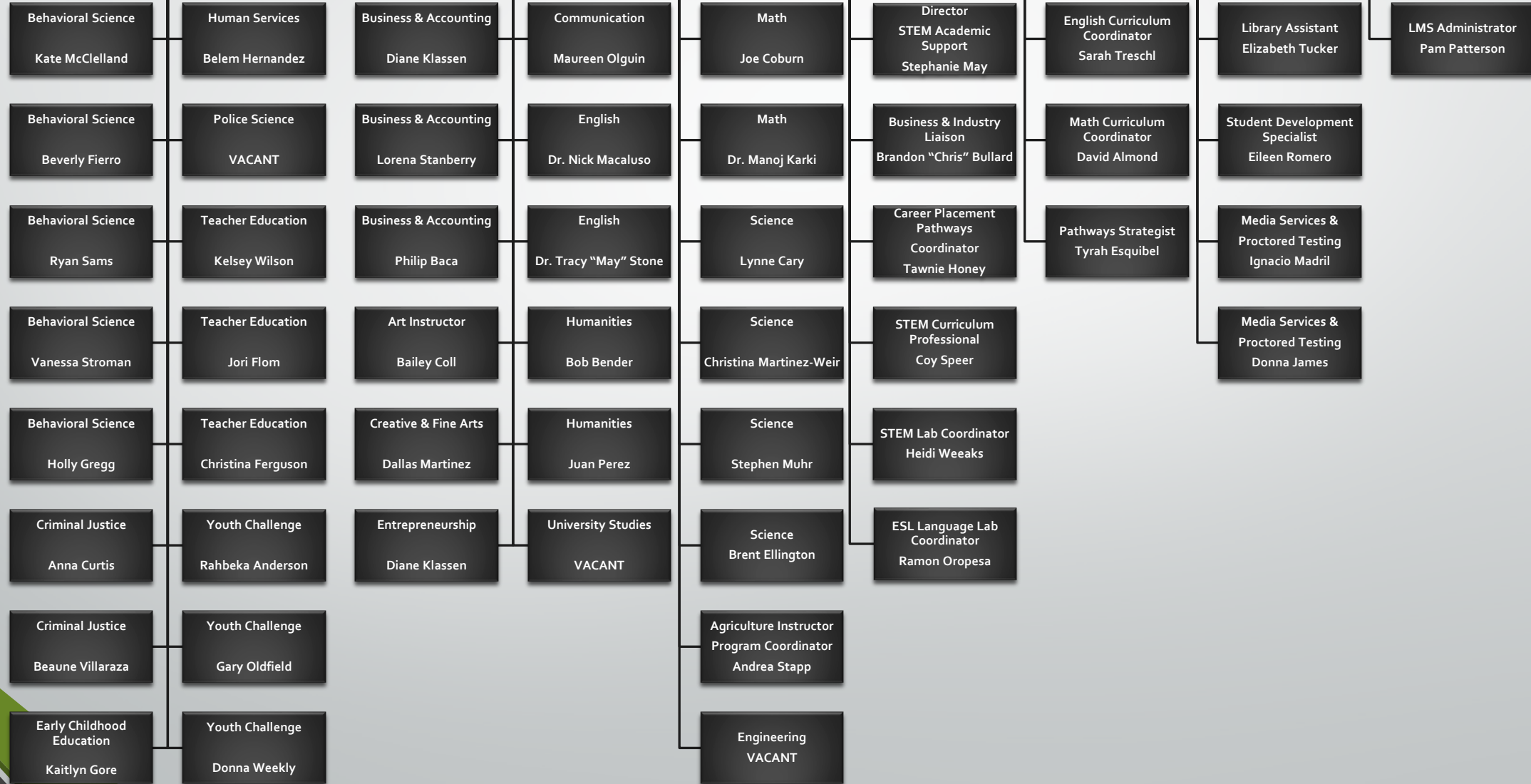
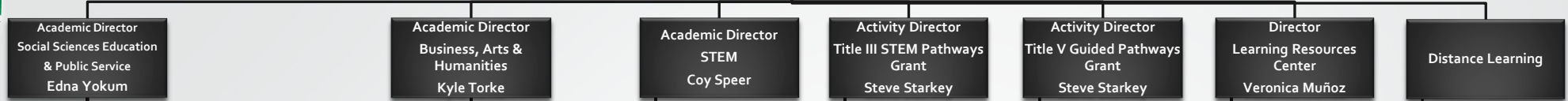
[Return to  
Table of Contents](#)

# Arts & Science Education



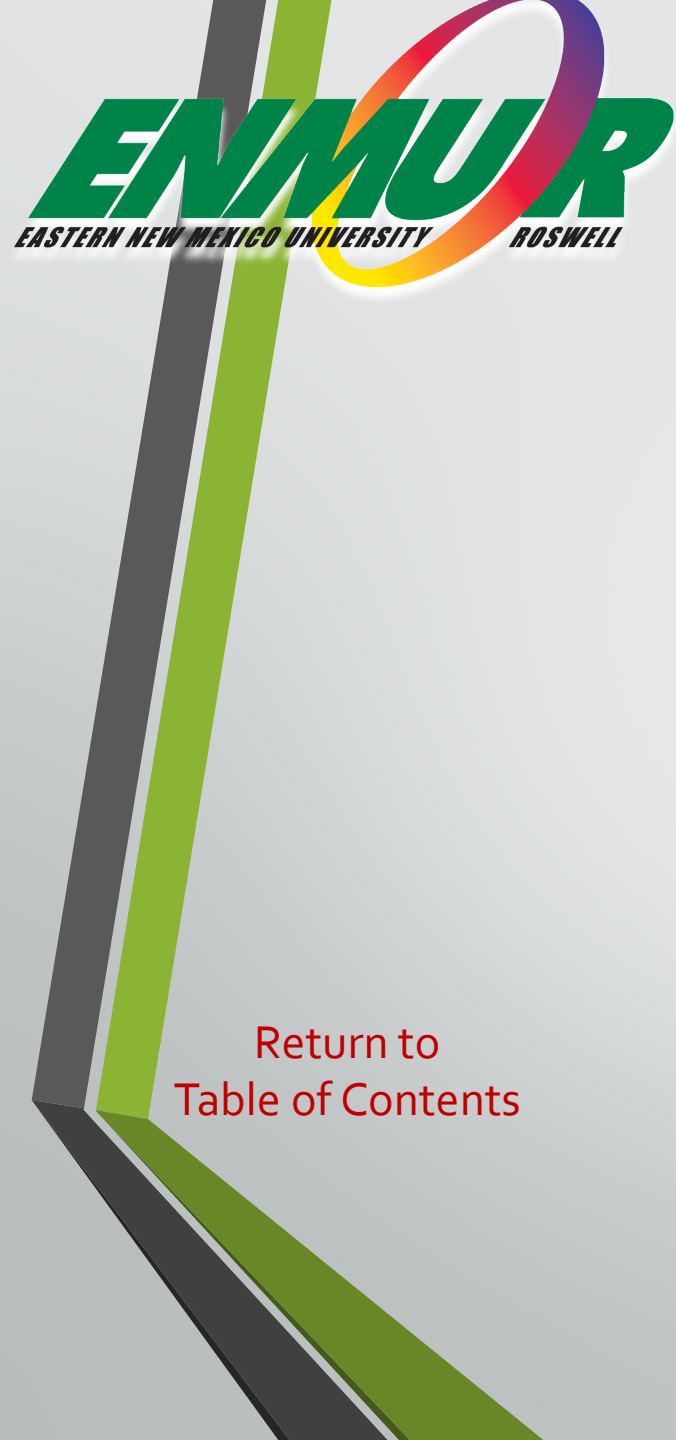
Assistant Vice President  
Arts & Science  
Education  
Robert Moore

Administrative  
Assistant  
Sherry Durand



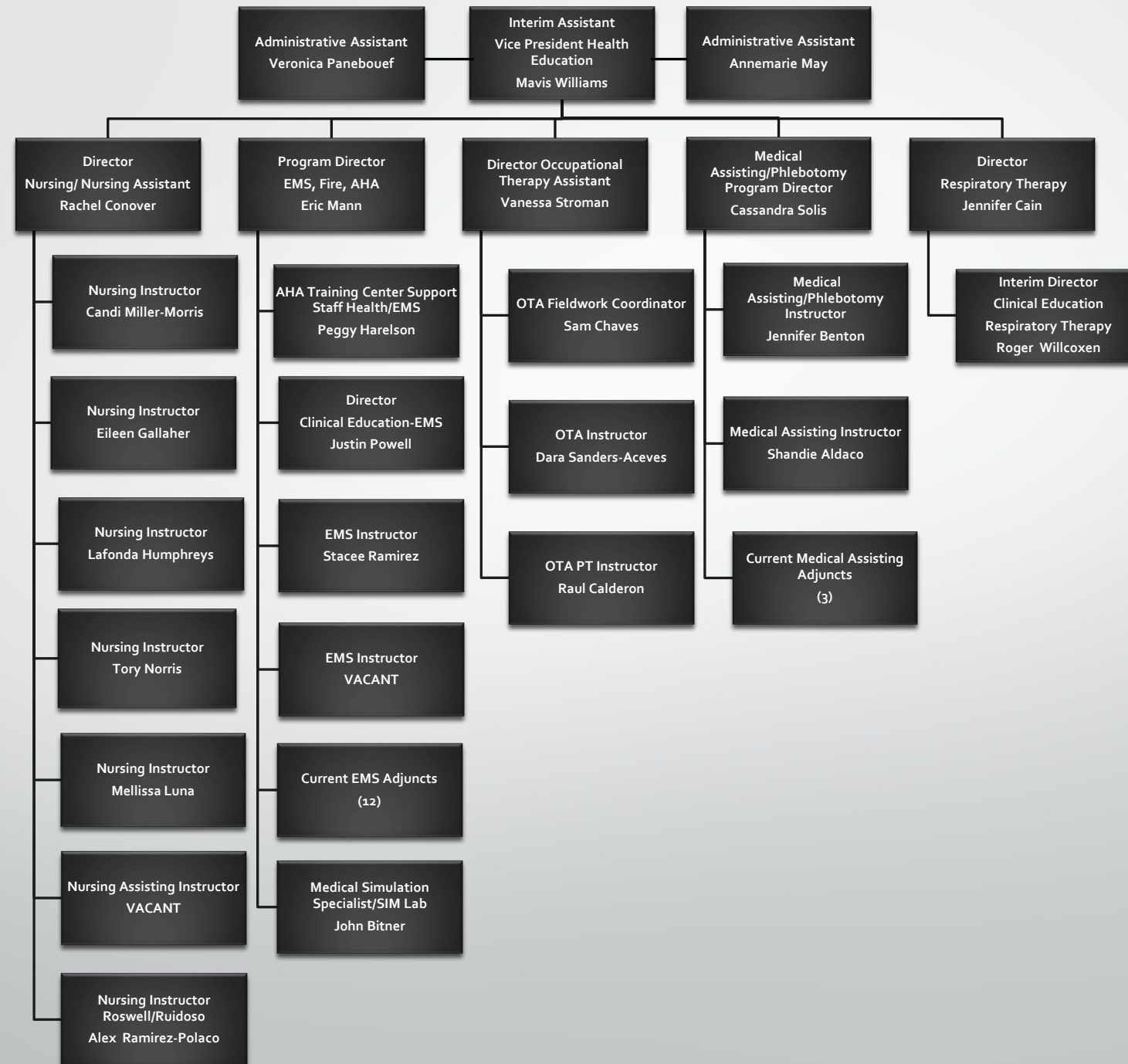
Return to  
Table of  
Contents





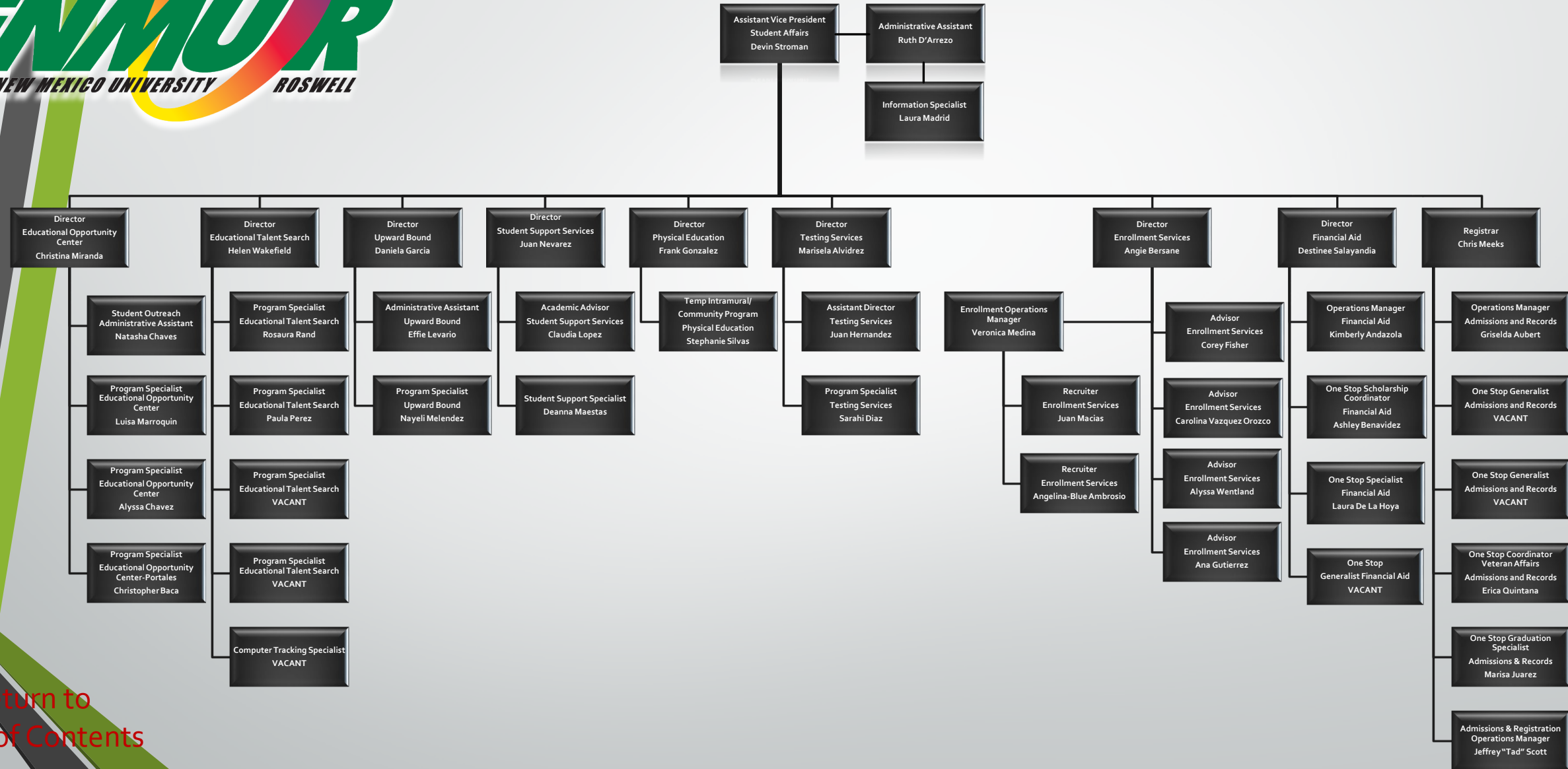
[Return to  
Table of Contents](#)

# Health Education





# Student Affairs



[Return to  
Table of Contents](#)

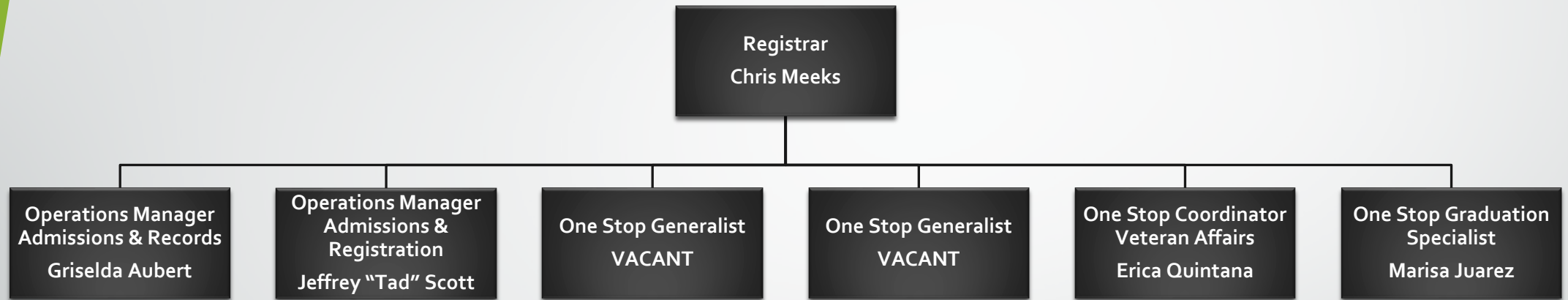


# Technical Education



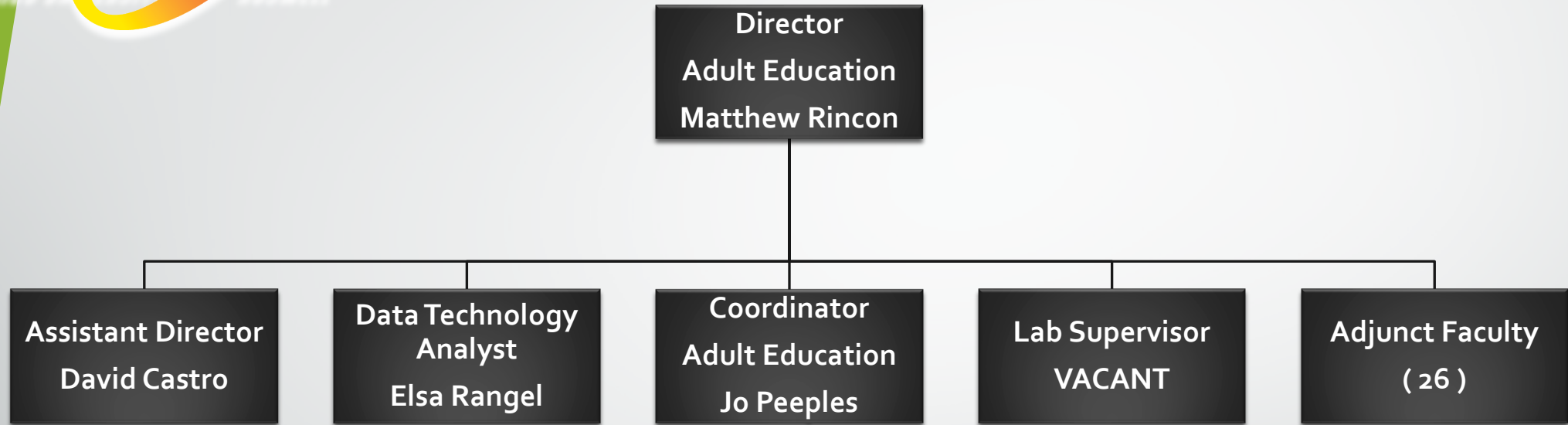
[Return to  
Table of Contents](#)

# Admissions & Records



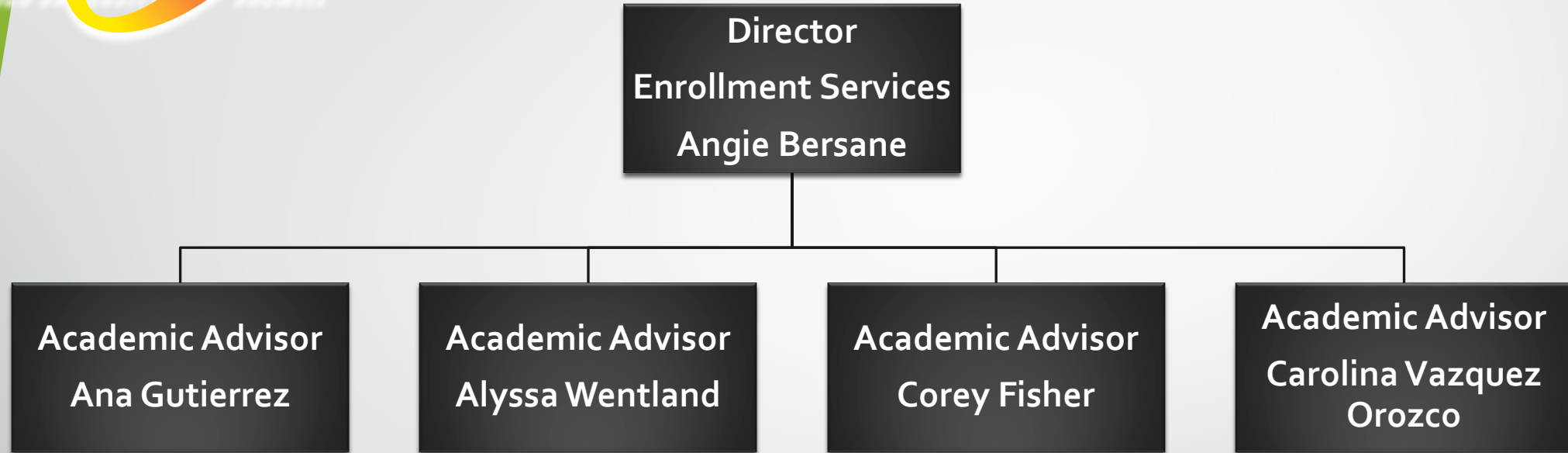
[Return to  
Table of Contents](#)

# Adult Education



[Return to  
Table of Contents](#)

# Advising



[Return to  
Table of Contents](#)



# Business Arts & Humanities

Academic Director  
Business, Arts &  
Humanities  
Kyle Torke

Business & Accounting  
Diane Klassen

Communication  
Maureen Olguin

Business & Accounting  
Lorena Stanberry

English  
Dr. Nick Macaluso

Business & Accounting  
Philip Baca

English  
Dr. Tracy "May" Stone

Art  
Bailey Coll

Humanities  
Bob Bender

Creative & Fine Arts  
Dallas Martinez

Humanities  
Juan Perez

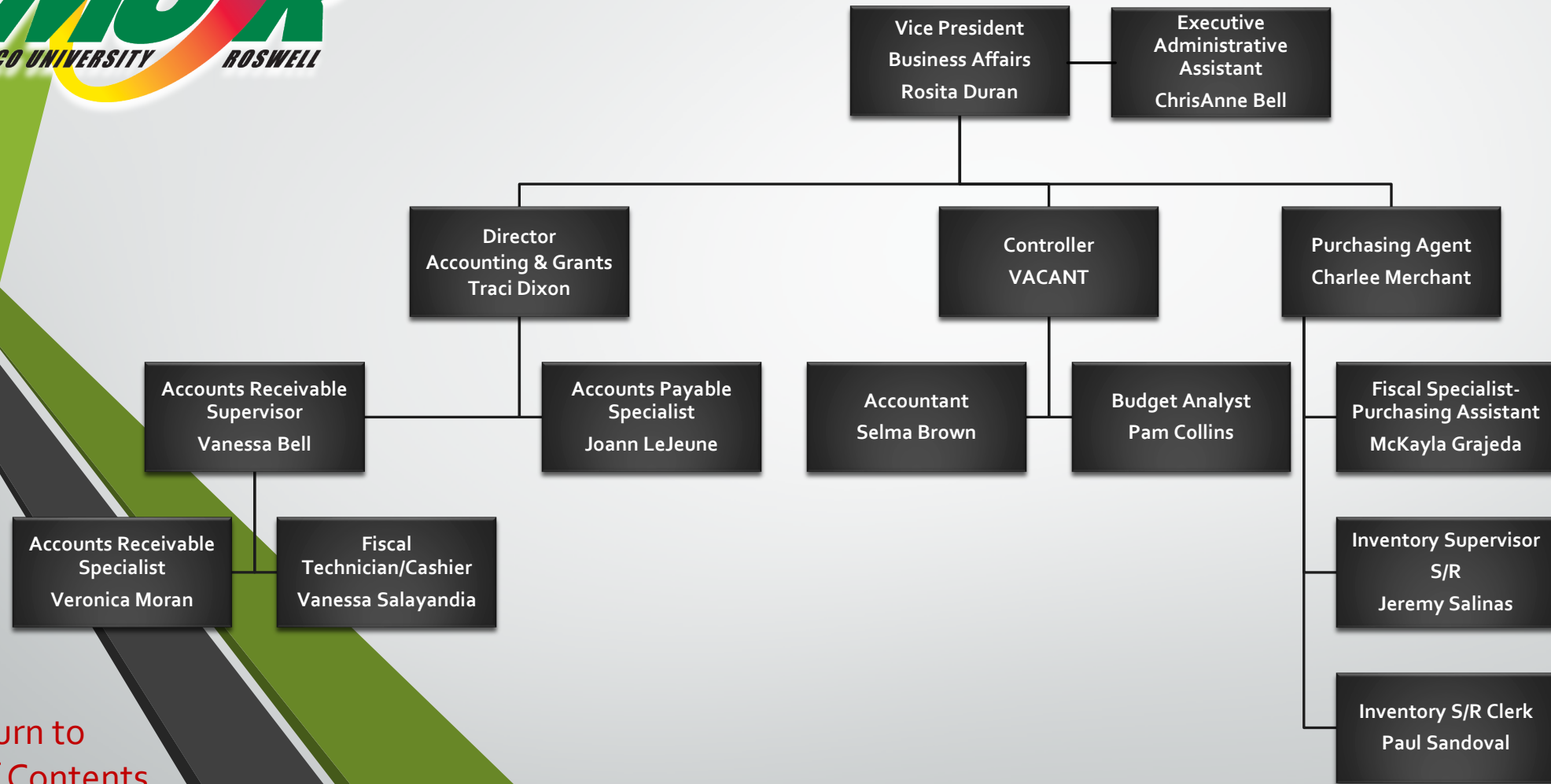
Entrepreneurship  
Diane Klassen

University Studies  
VACANT

[Return to  
Table of Contents](#)

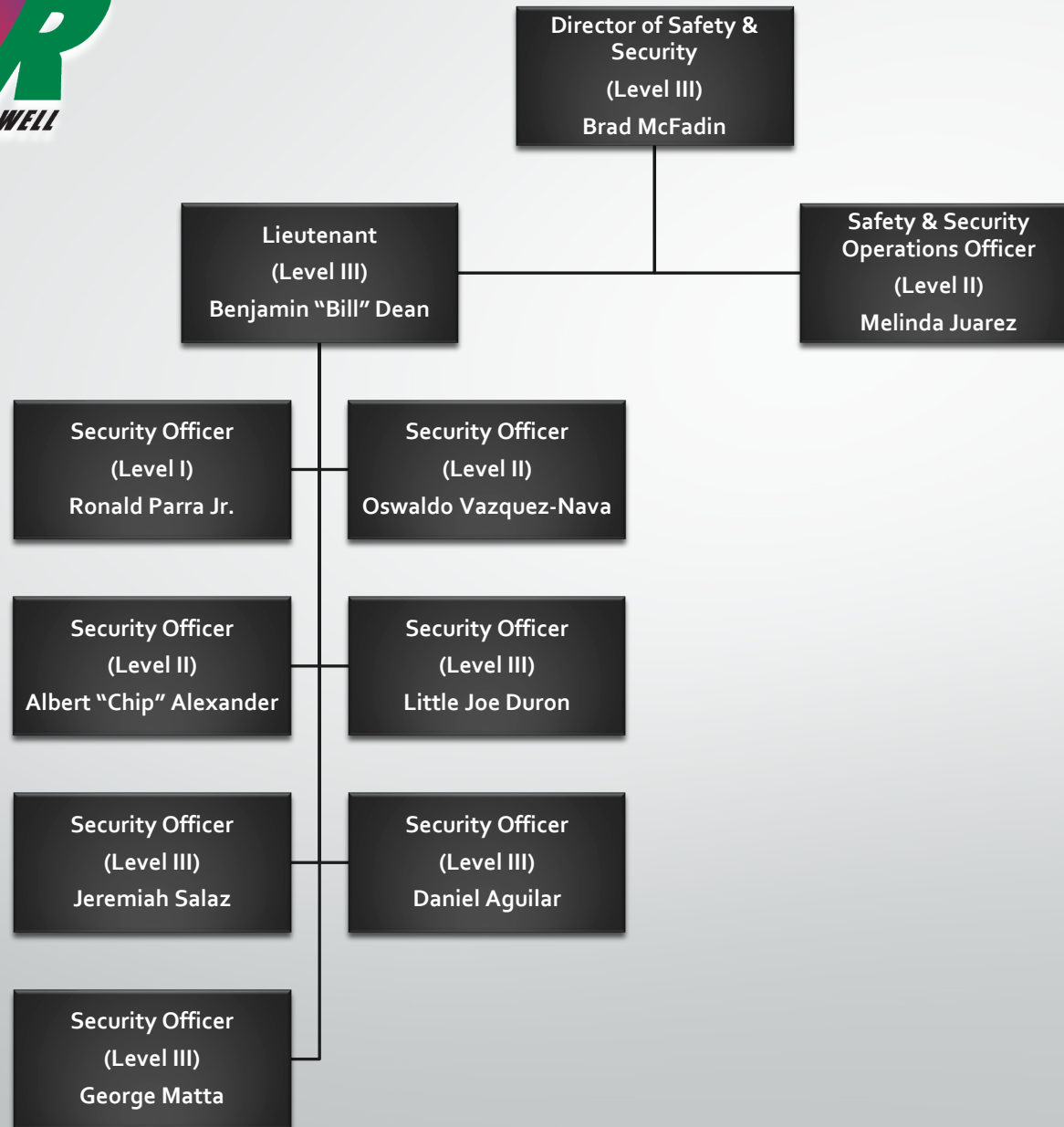


# Business Office



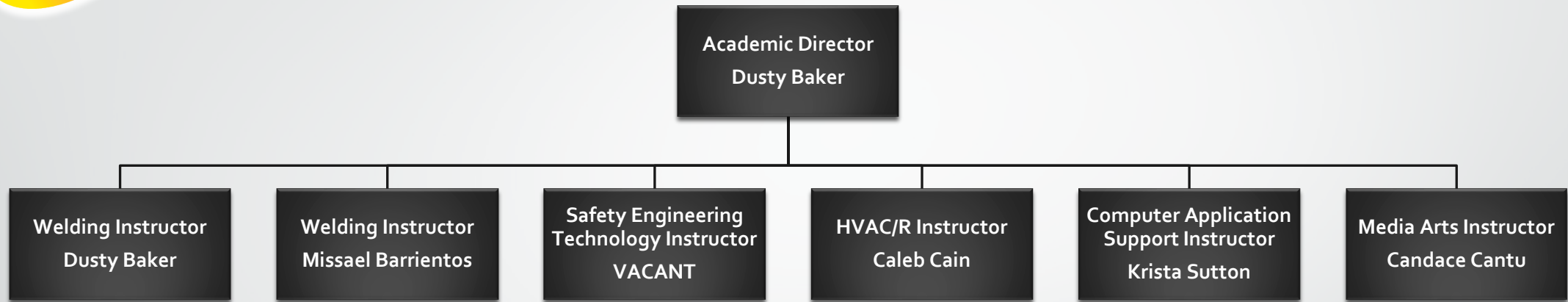
[Return to  
Table of Contents](#)

# Campus Security



[Return to  
Table of Contents](#)

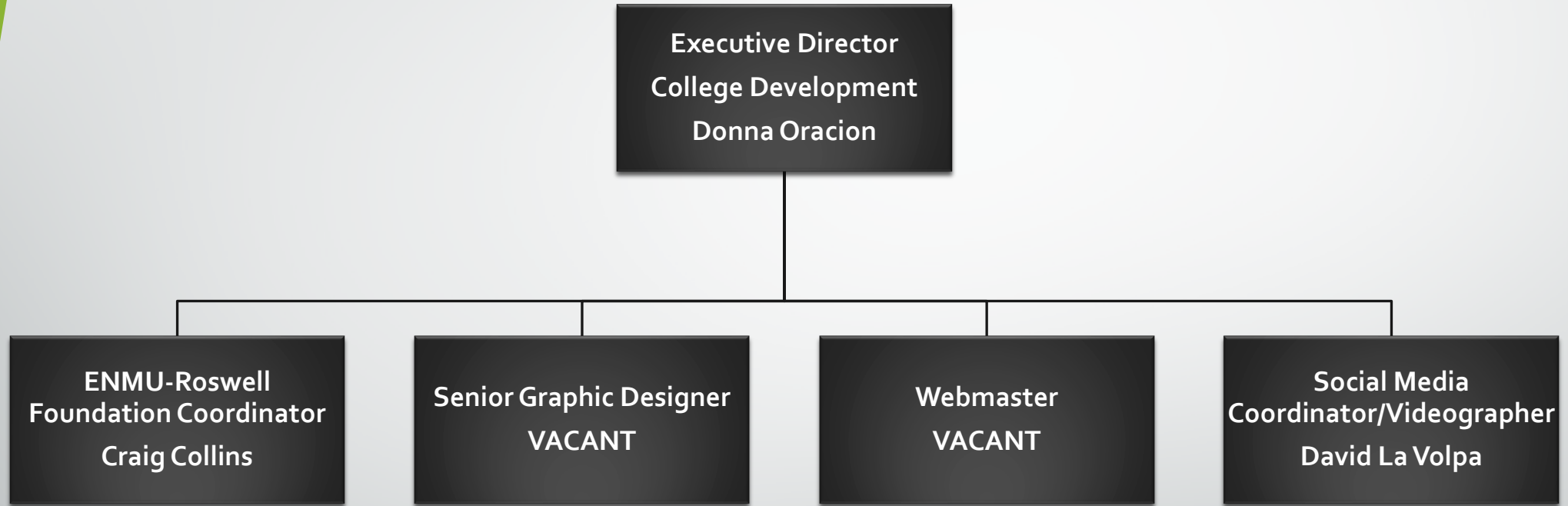
# Career & Technical Education



[Return to  
Table of Contents](#)



# College Development



[Return to  
Table of Contents](#)

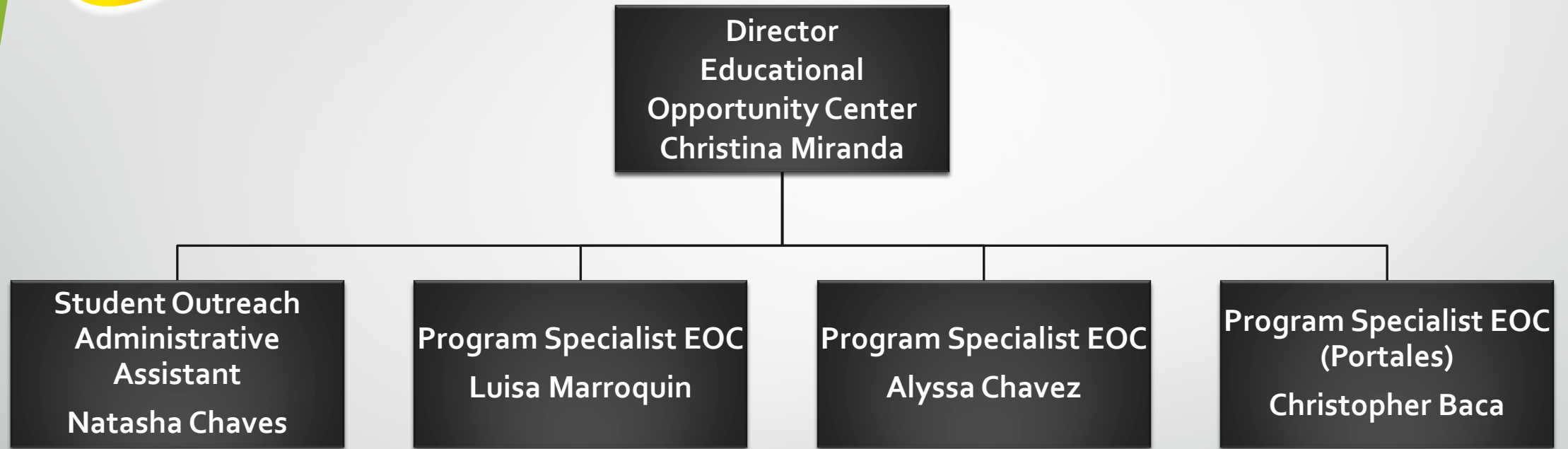


# Custodian Services



[Return to  
Table of Contents](#)

# Educational Opportunity Center



[Return to  
Table of Contents](#)



# Educational Talent Search



[Return to  
Table of Contents](#)

# Emergency Medical Services



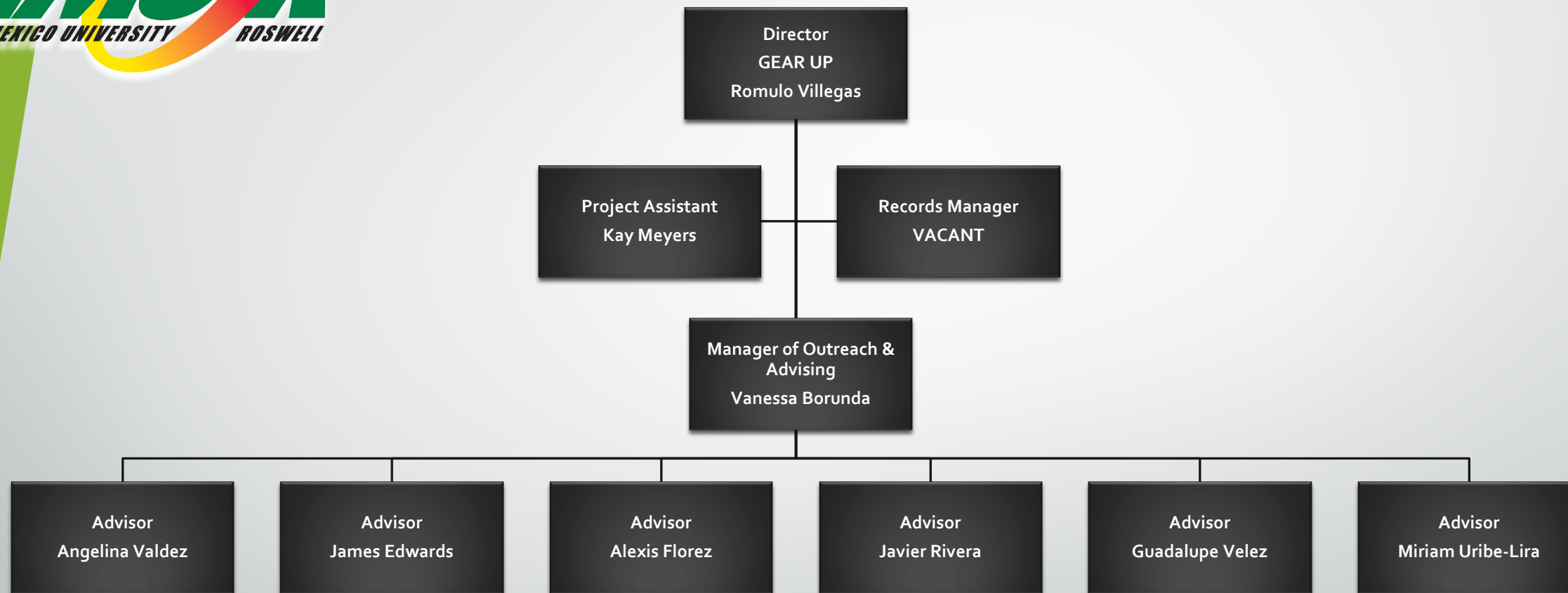
[Return to  
Table of Contents](#)

# Financial Aid



[Return to  
Table of Contents](#)

# GEAR UP



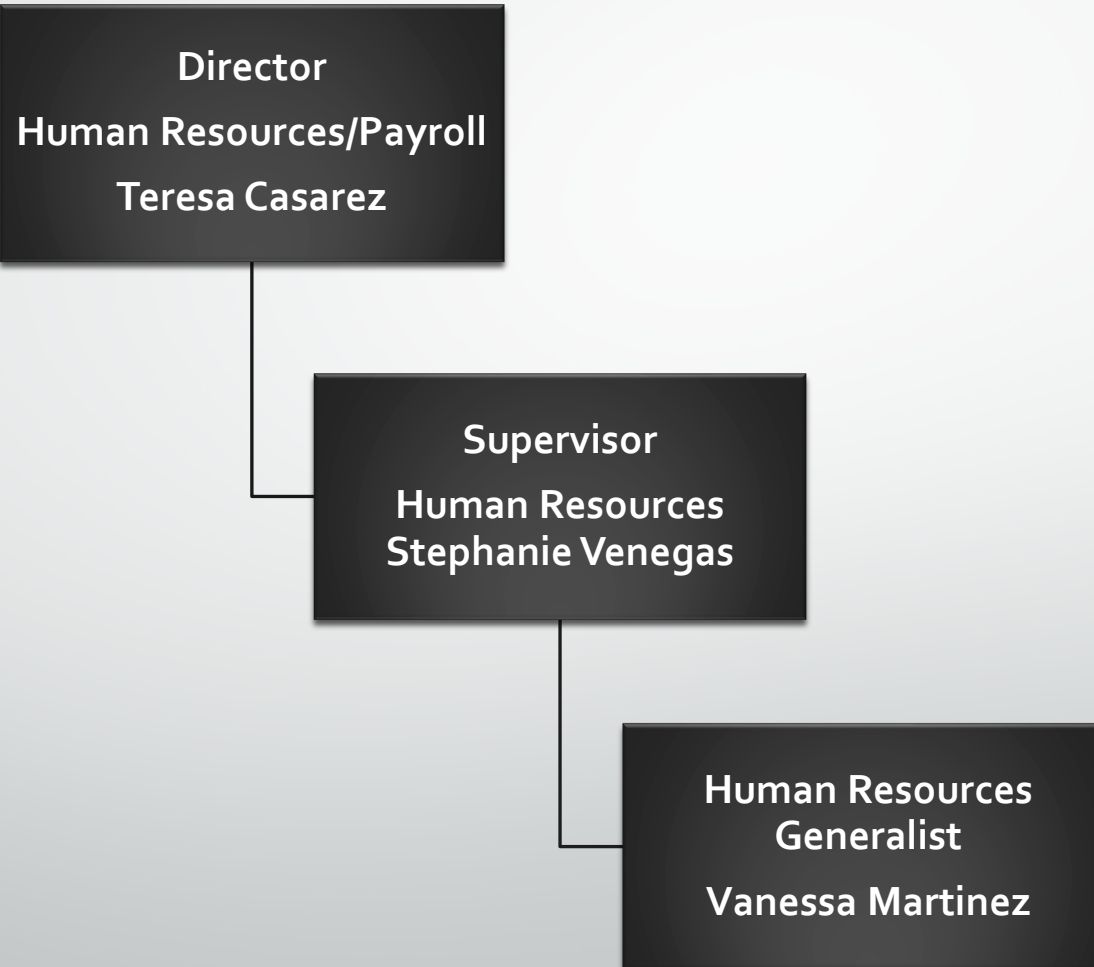
[Return to  
Table of Contents](#)

# Grounds



[Return to  
Table of Contents](#)

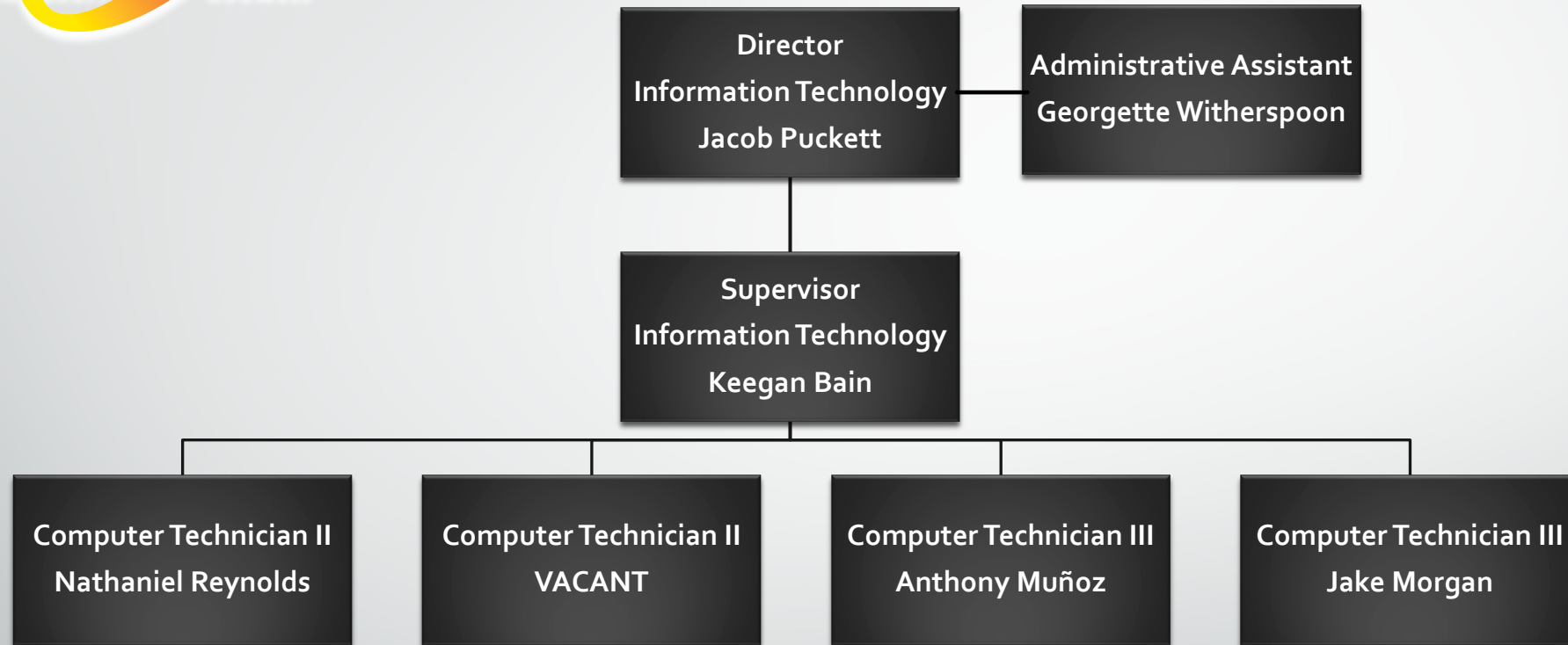
# Human Resources



[Return to  
Table of Contents](#)



# Information Technology



[Return to  
Table of Contents](#)



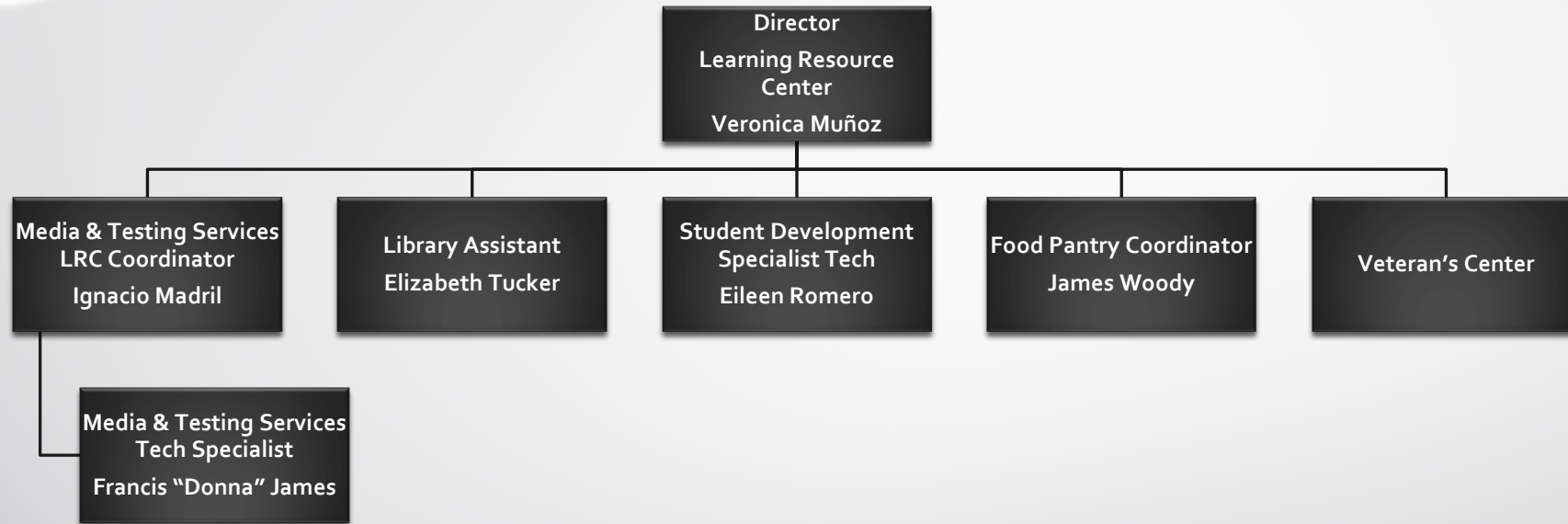
# Institutional Effectiveness

Executive Director  
Institutional  
Effectiveness  
Todd DeKay

Institutional Research  
Analyst  
Rahbeka Anderson

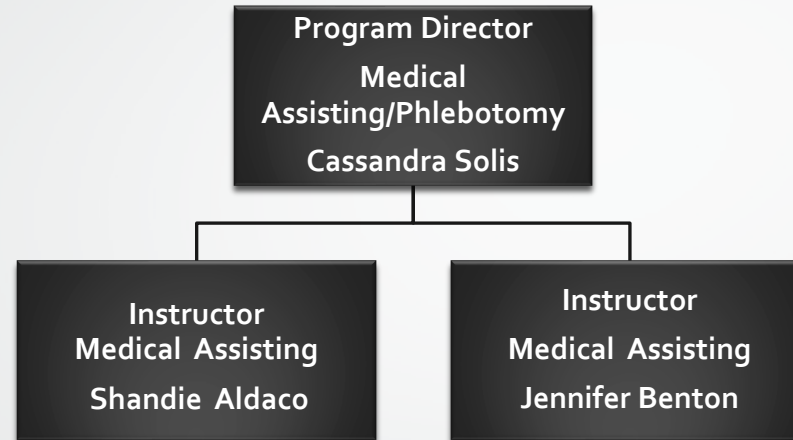
[Return to  
Table of Contents](#)

# Learning Resource Center



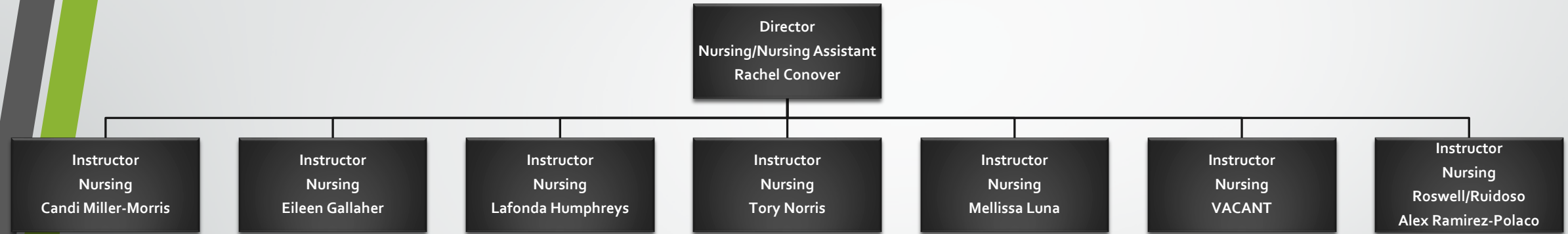
[Return to  
Table of Contents](#)

# Medical Assisting



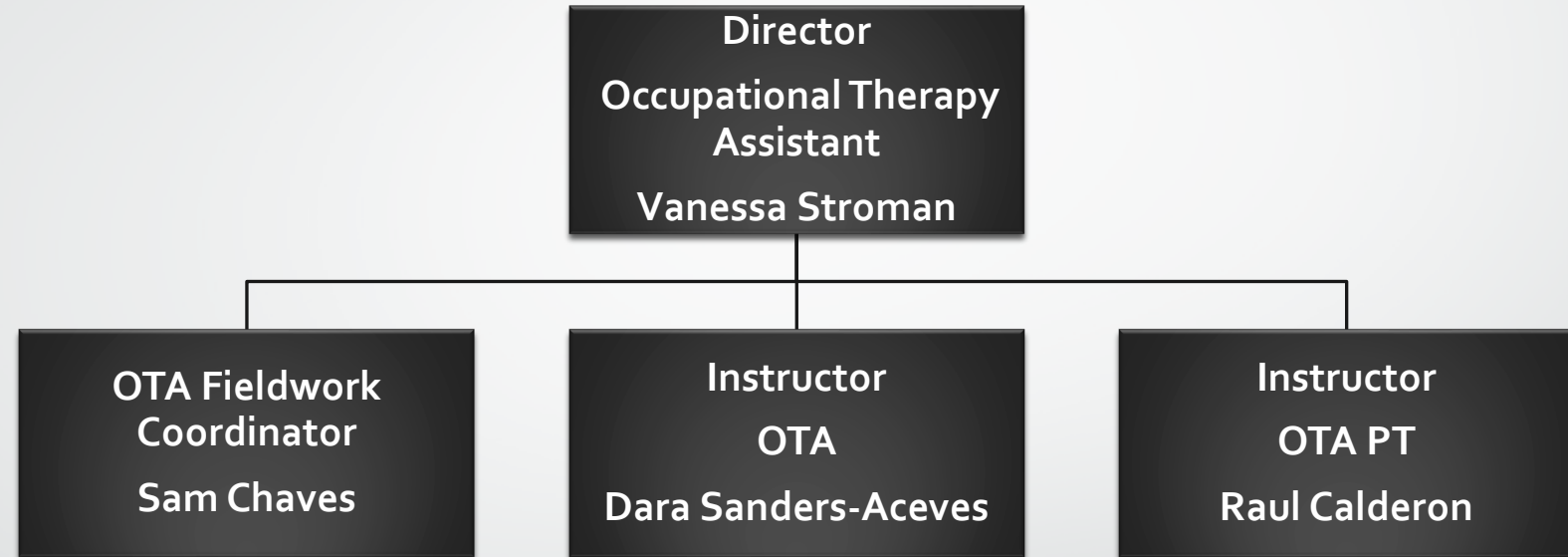
[Return to  
Table of Contents](#)

# Nursing



[Return to  
Table of Contents](#)

# Occupational Therapy Assistant



[Return to  
Table of Contents](#)



# Payroll

Director  
Human Resources/  
Payroll  
Teresa Casarez

Payroll Supervisor  
Crystal Garcia

Payroll Specialist  
Theresa Cruz

[Return to  
Table of Contents](#)



# Physical Education Center

Director  
Physical Education  
Frank Gonzalez

Temporary  
Intramural/Community  
Program  
Stephanie Silvas

[Return to  
Table of Contents](#)



# Physical Plant



[Return to  
Table of Contents](#)

# Respiratory Therapy

Director  
Respiratory Therapy  
Jennifer Cain

Interim Director  
Clinical Education/Respiratory  
Therapy  
Roger Willcoxon

[Return to  
Table of Contents](#)



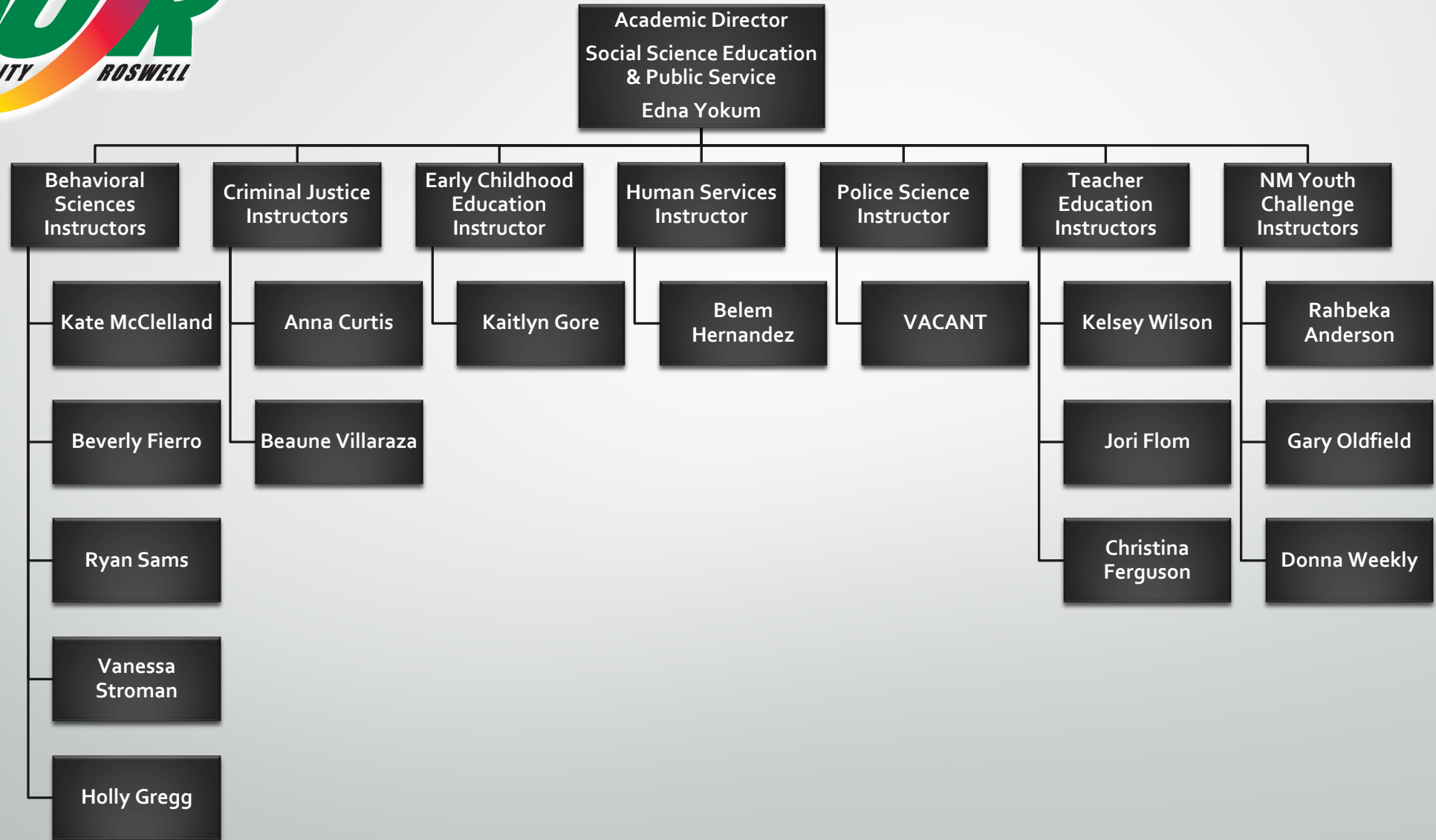
# Small Business Development Center

Director  
Small Business Development  
Center  
Scott Bucher

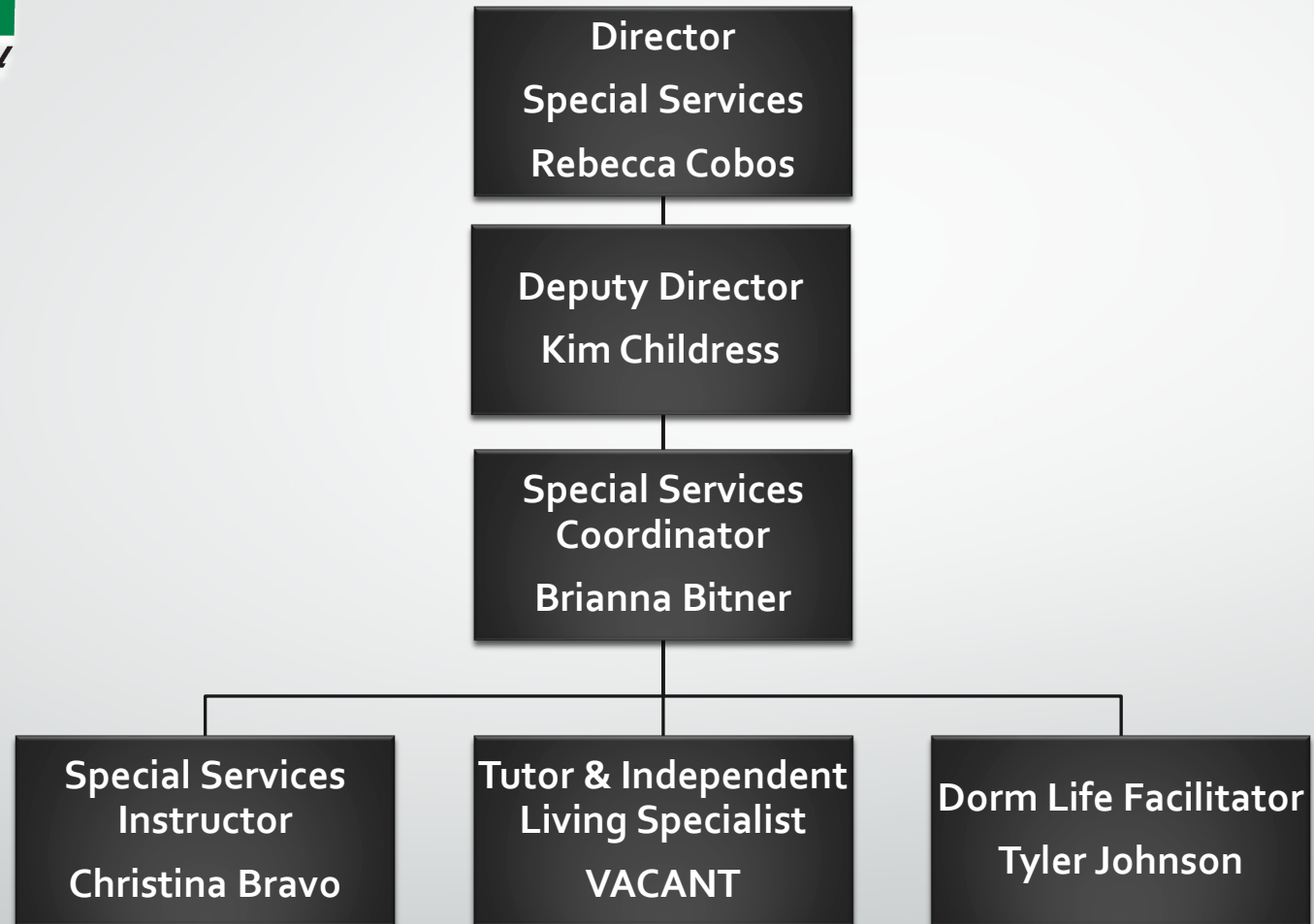
Coordinator  
Carolyn Arias

[Return to  
Table of Contents](#)

# Social Sciences



# Special Services



[Return to  
Table of Contents](#)



[Return to  
Table of Contents](#)

# STEM

Academic Director  
STEM

Coy Speer

Math

Joe Coburn

Science

Steven Muhr

Math

Dr. Manoj Karki

Science

Brent Ellington

Science

Lynne Cary

Agriculture

Program Coordinator  
Andrea Stapp

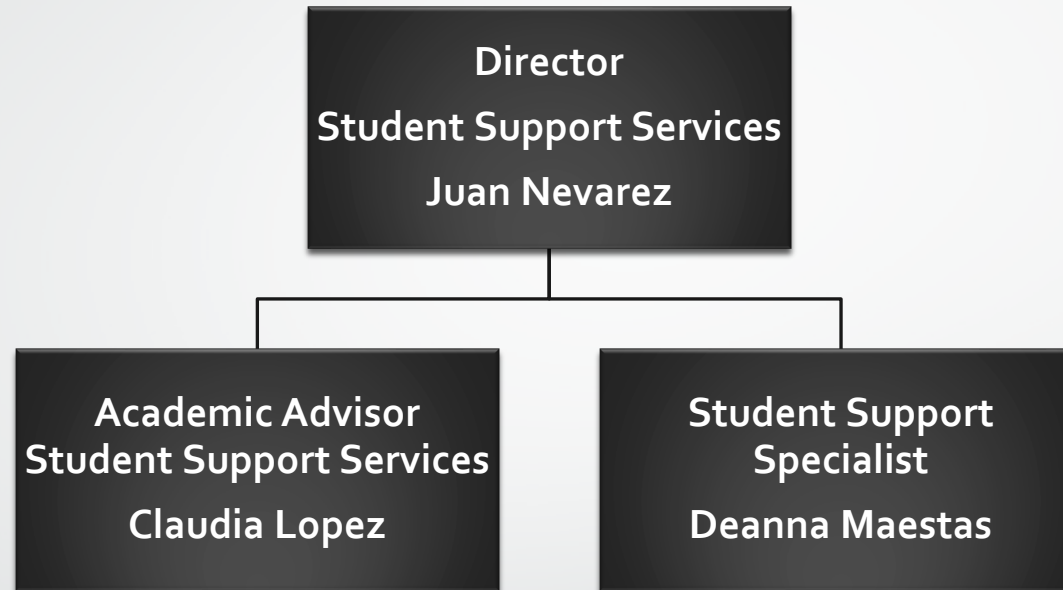
Science

Christina Martinez-  
Weir

Engineering

VACANT

# Student Support Services

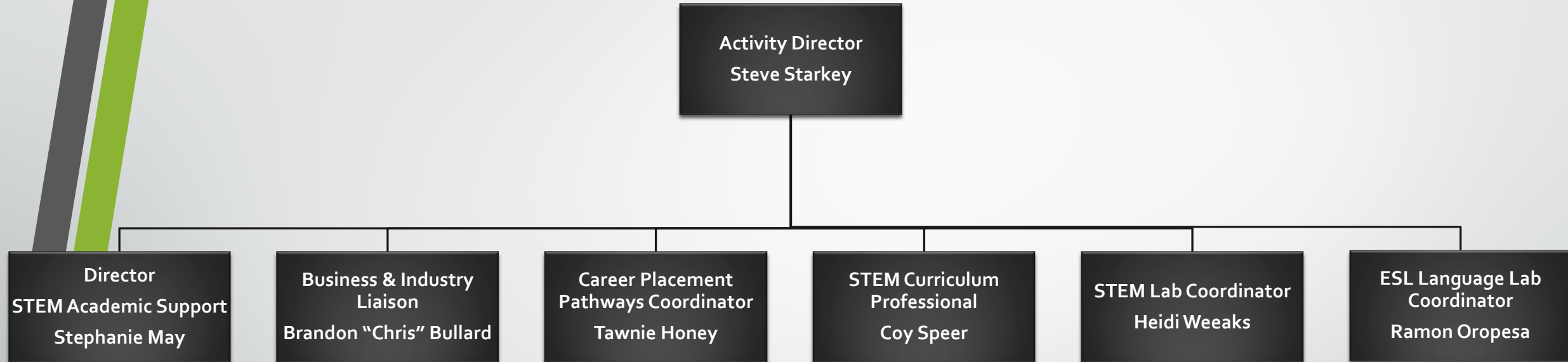


# Testing Services



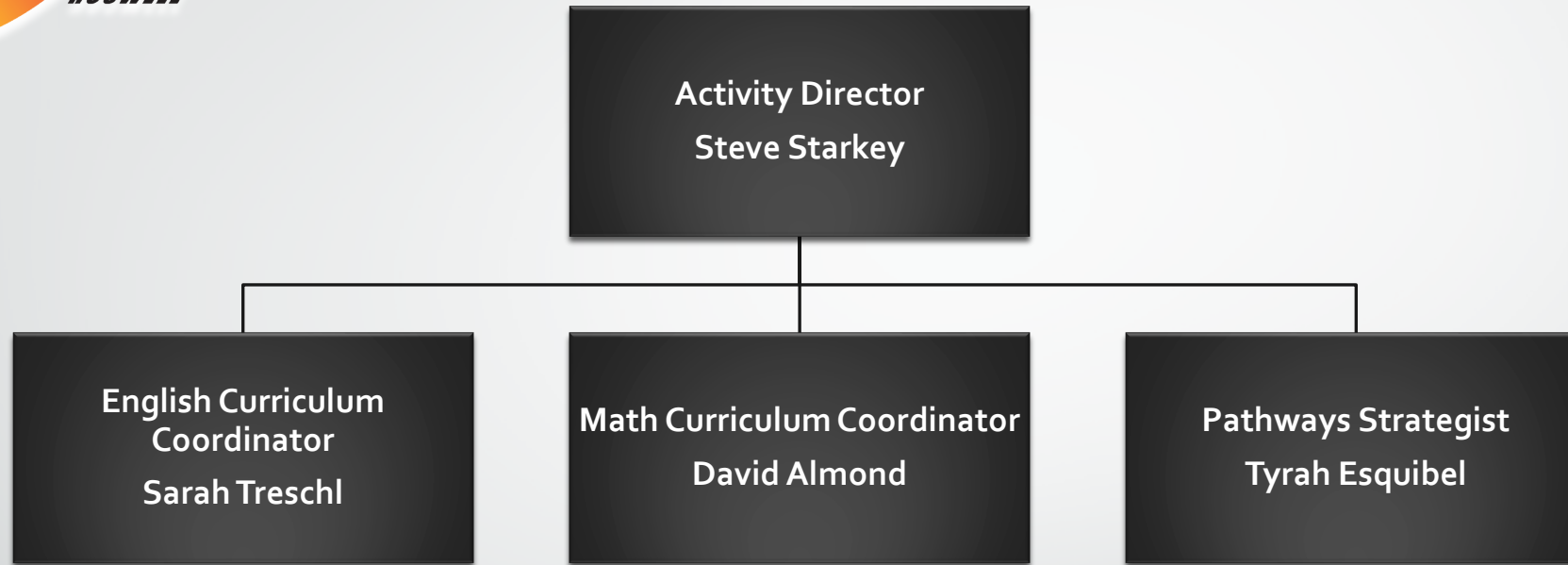
[Return to  
Table of Contents](#)

# Title III STEM Pathways



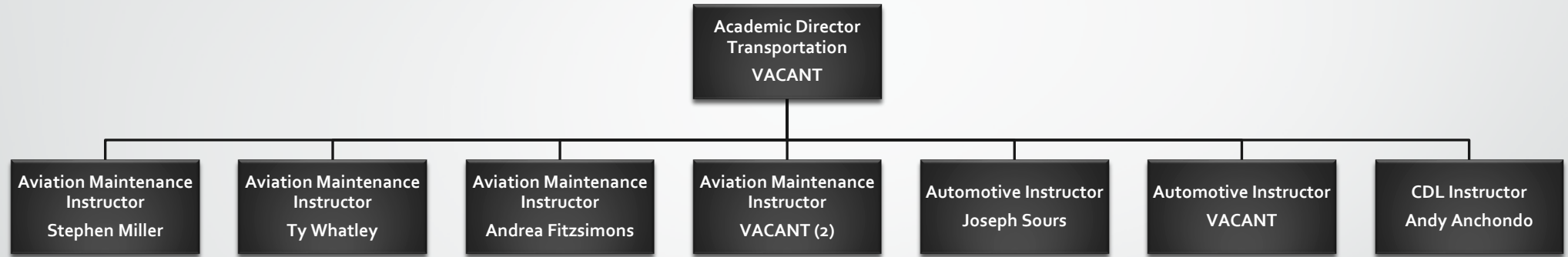
[Return to  
Table of Contents](#)

# Title V Guided Pathways



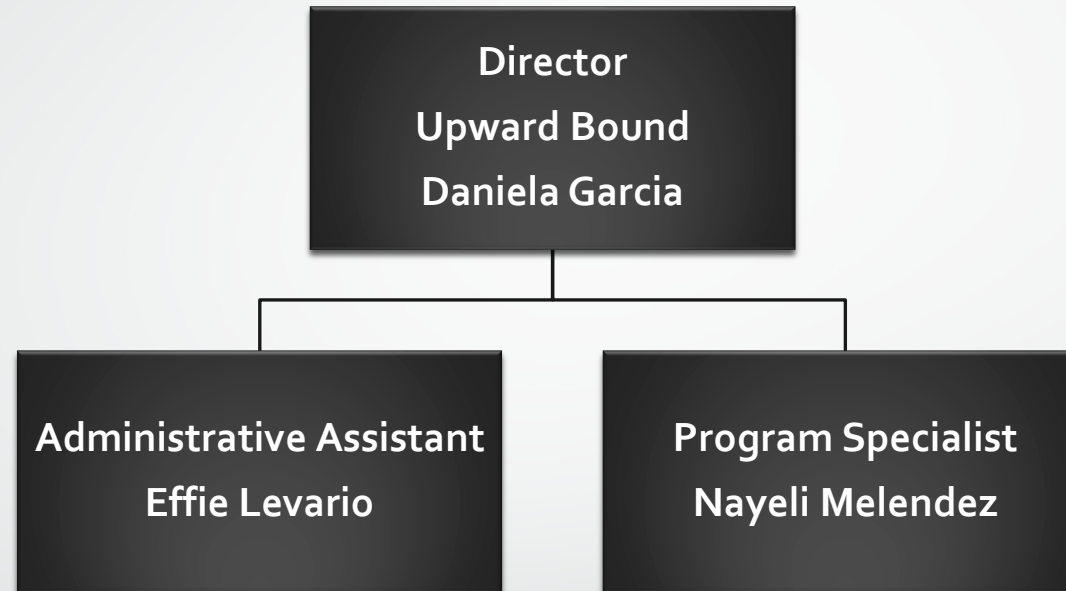
[Return to  
Table of Contents](#)

# Transportation



[Return to  
Table of Contents](#)

# Upward Bound



[Return to  
Table of Contents](#)